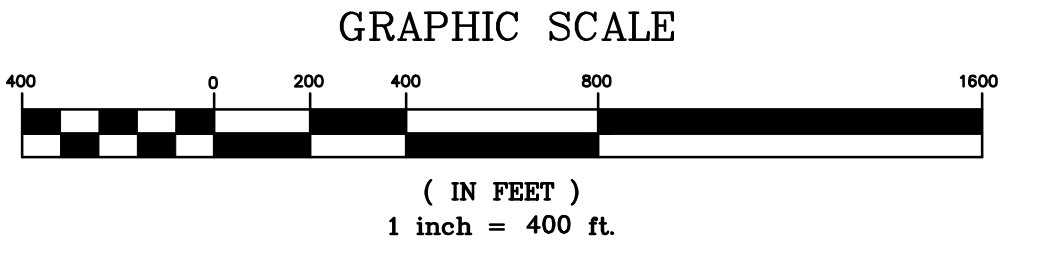
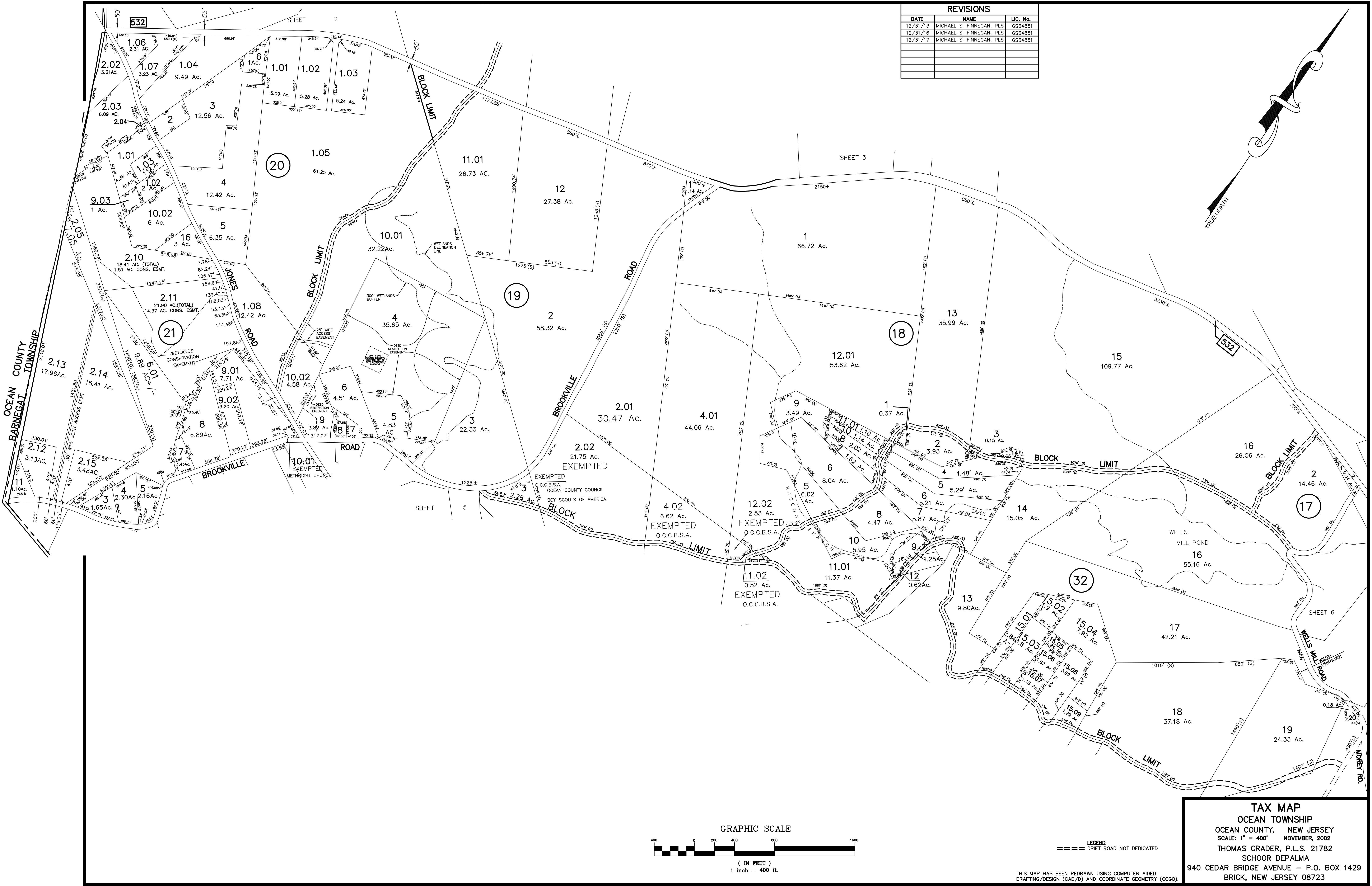
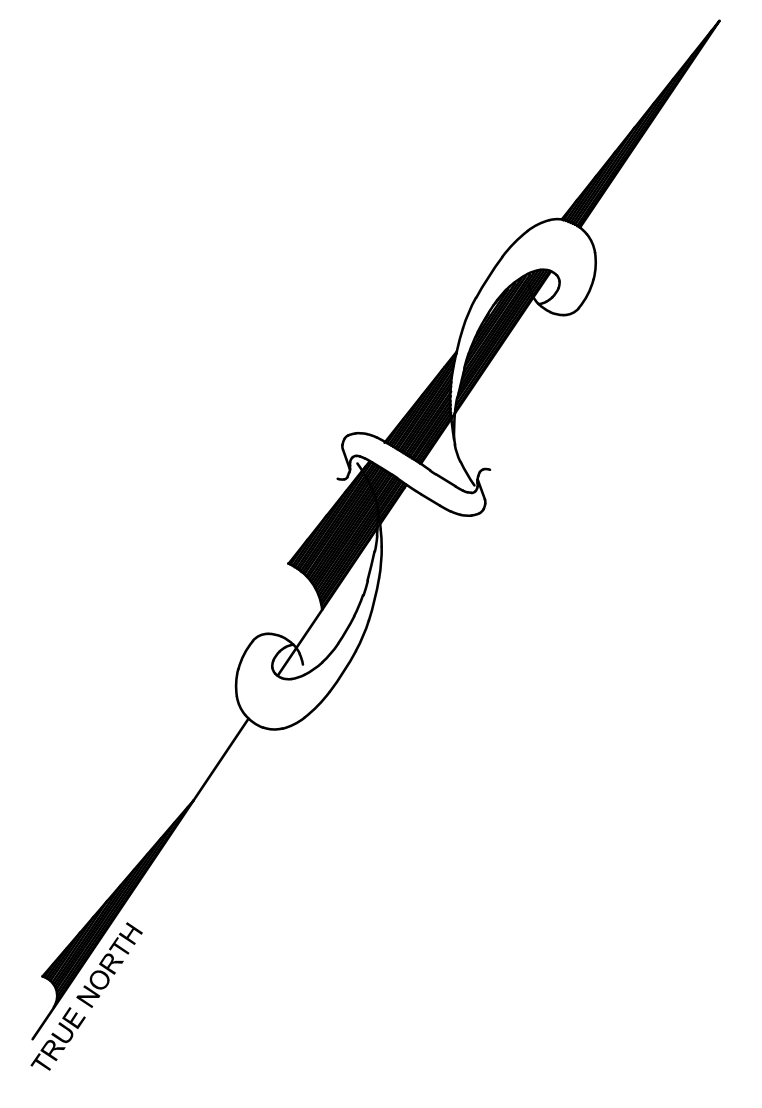


REVISIONS		
DATE	NAME	U.C. No.
12/31/13	MICHAEL S. FINNEGAN, PLS	GS34851
12/31/16	MICHAEL S. FINNEGAN, PLS	GS34851
12/31/17	MICHAEL S. FINNEGAN, PLS	GS34851



**LEGEND**  
 - - - - - DRIFT ROAD NOT DEDICATED

**TAX MAP**  
**OCEAN TOWNSHIP**  
 OCEAN COUNTY, NEW JERSEY  
 SCALE: 1" = 400' NOVEMBER, 2002  
 THOMAS CRADER, P.L.S. 21782  
 SCHOOR DEPALMA  
 940 CEDAR BRIDGE AVENUE - P.O. BOX 1429  
 BRICK, NEW JERSEY 08723

THIS MAP HAS BEEN REDRAWN USING COMPUTER AIDED DRAFTING/DESIGN (CAD/D) AND COORDINATE GEOMETRY (COGO).