

ALL PRIVATE ROADS ON THIS SHEET ARE KNOWN AS LOT 1 IN BLOCK 57.01

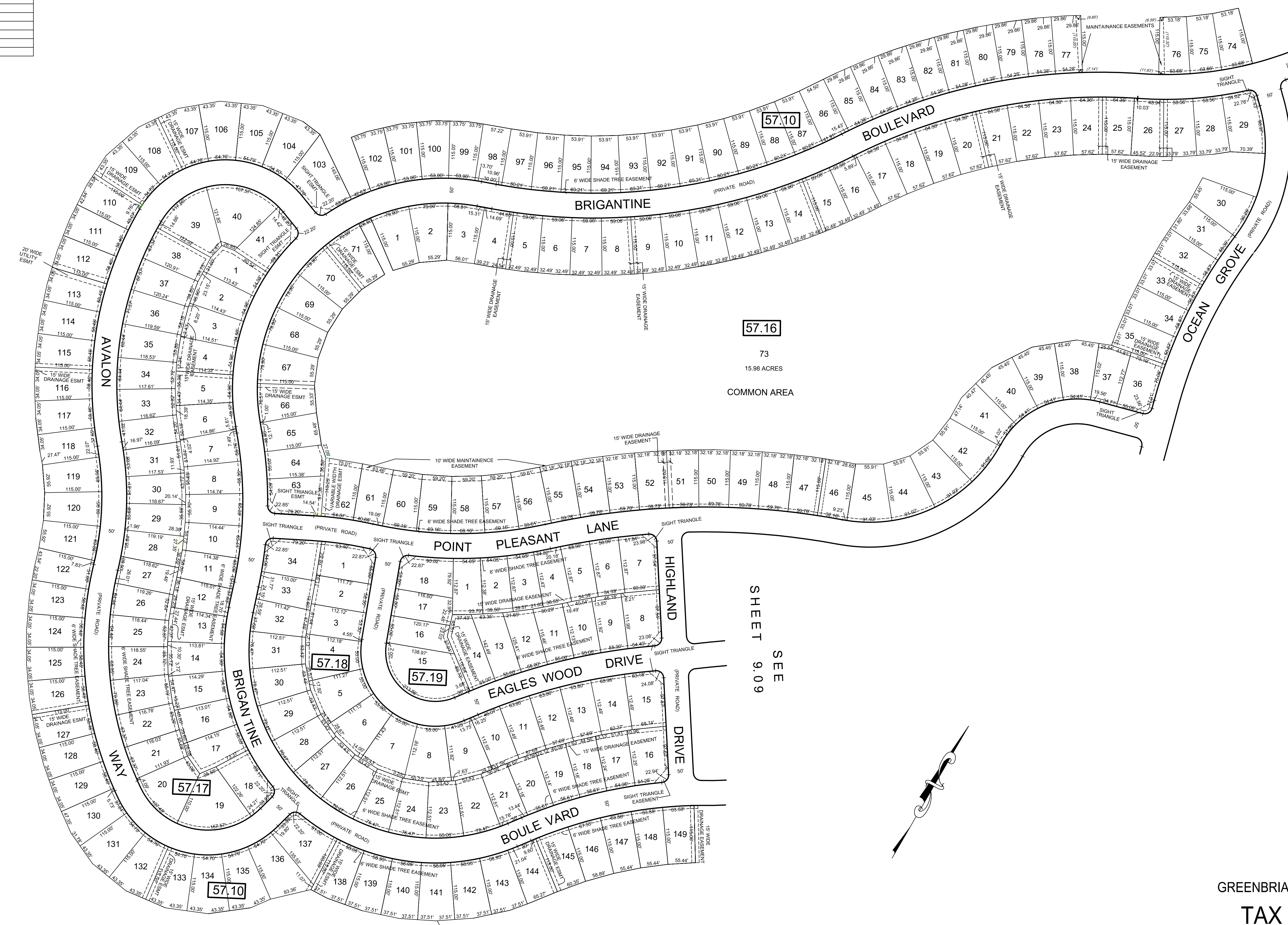
REVISIONS		
DATE	NAME	LIC. No.
12/31/18	MICHAEL S. FINNEGAN, PLS	GS34851

SEE SHEET 9

SEE SHEET 9

SEE SHEET 9.11

SEE SHEET 9.09



GREENBRIAR OCEANAIRE
TAX MAP
 OCEAN TOWNSHIP
 OCEAN COUNTY, NEW JERSEY

SCALE: 1" = 100' DECEMBER 10, 2005

T. RONALD GSELL, P.E. & P.L.S.

200 HIGH STREET, MOUNT HOLLY, N.J.

THIS SHEET IS AN AUTOCAD COMPUTER GENERATED DRAWING.
 THIS WAS DONE UNDER THE SUPERVISION OF T. RONALD GSELL, P.E. & P.L.S.
 LICENSED LAND SURVEYOR N.J. LICENSE NO. 12812 DATED DECEMBER 10, 2005.
 THE APPROVED ORIGINAL IS ON FILE IN THE ENGINEER'S OFFICE.