

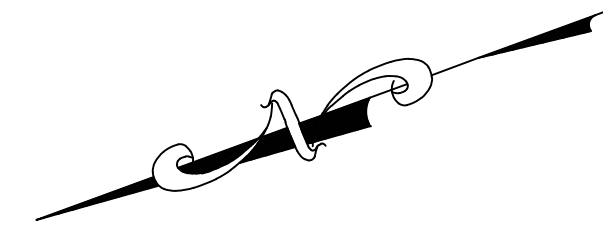
THIS SHEET IS AN AUTOCAD COMPUTER GENERATED DRAWING.
THIS WAS DONE UNDER THE SUPERVISION OF T. RONALD GSELL, P.E. & P.L.S.
LICENSED LAND SURVEYOR N.J. LICENSE NO. 12812 DATED DECEMBER 10, 2004.
THE APPROVED ORIGINAL IS ON FILE IN THE ENGINEER'S OFFICE.

ALL PRIVATE ROADS ON THIS SHEET ARE KNOWN AS LOT 1 IN BLOCK 57.01

REVISIONS		
DATE	NAME	LIC. No.
12/31/18	MICHAEL S. FINNEGAN, PLS	GS34851

SEE SHEET 9.07

SEE SHEET 9.11



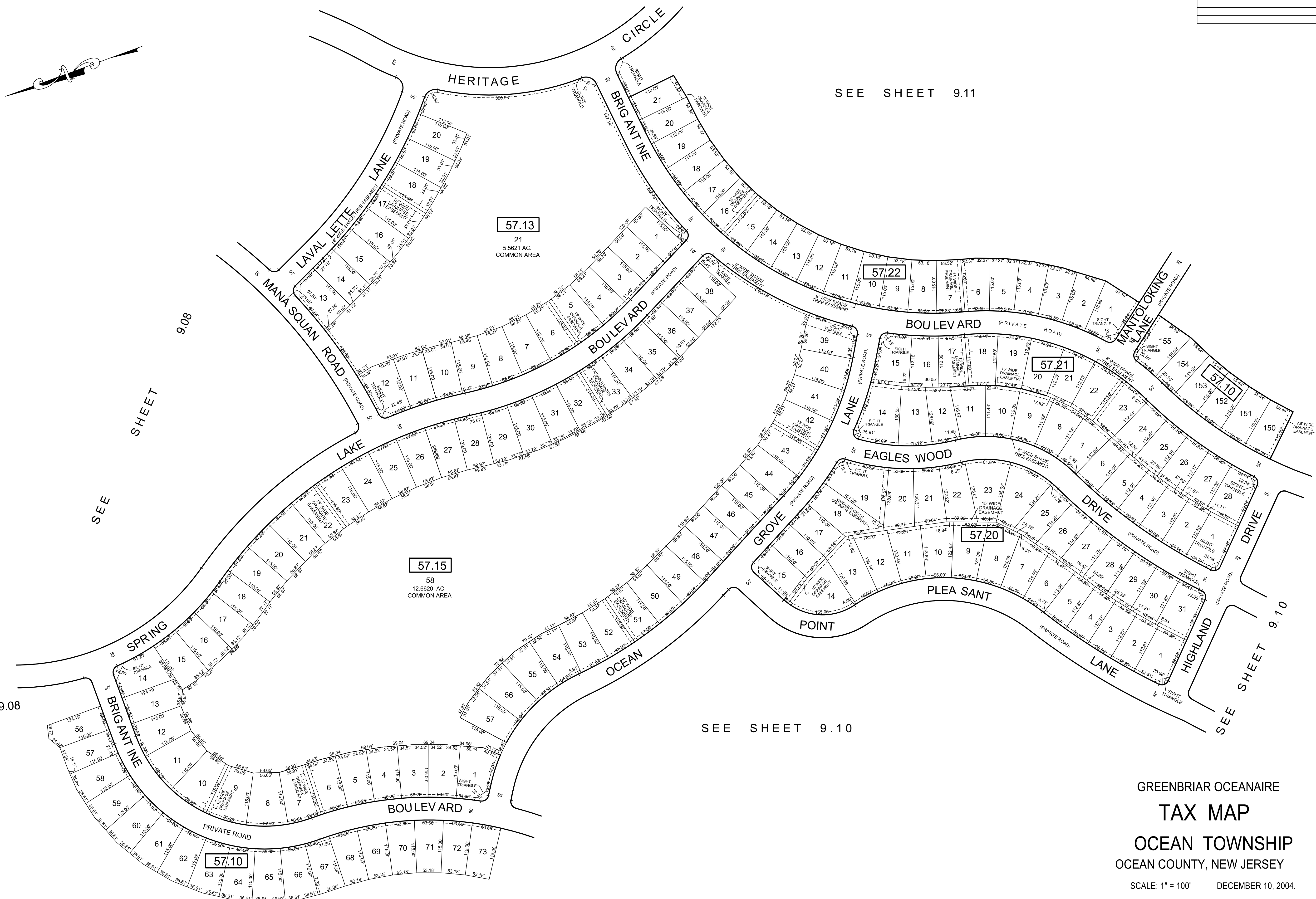
SEE SHEET 9.08

SEE SHEET 9.08

SEE SHEET 9.10

SEE SHEET 9.10

SEE SHEET 9



GREENBRIAR OCEANAIRE
TAX MAP
 OCEAN TOWNSHIP
 OCEAN COUNTY, NEW JERSEY
 SCALE: 1" = 100' DECEMBER 10, 2004.
 T. RONALD GSELL, P.E. & P.L.S.
 200 HIGH STREET, MOUNT HOLLY, N.J.