

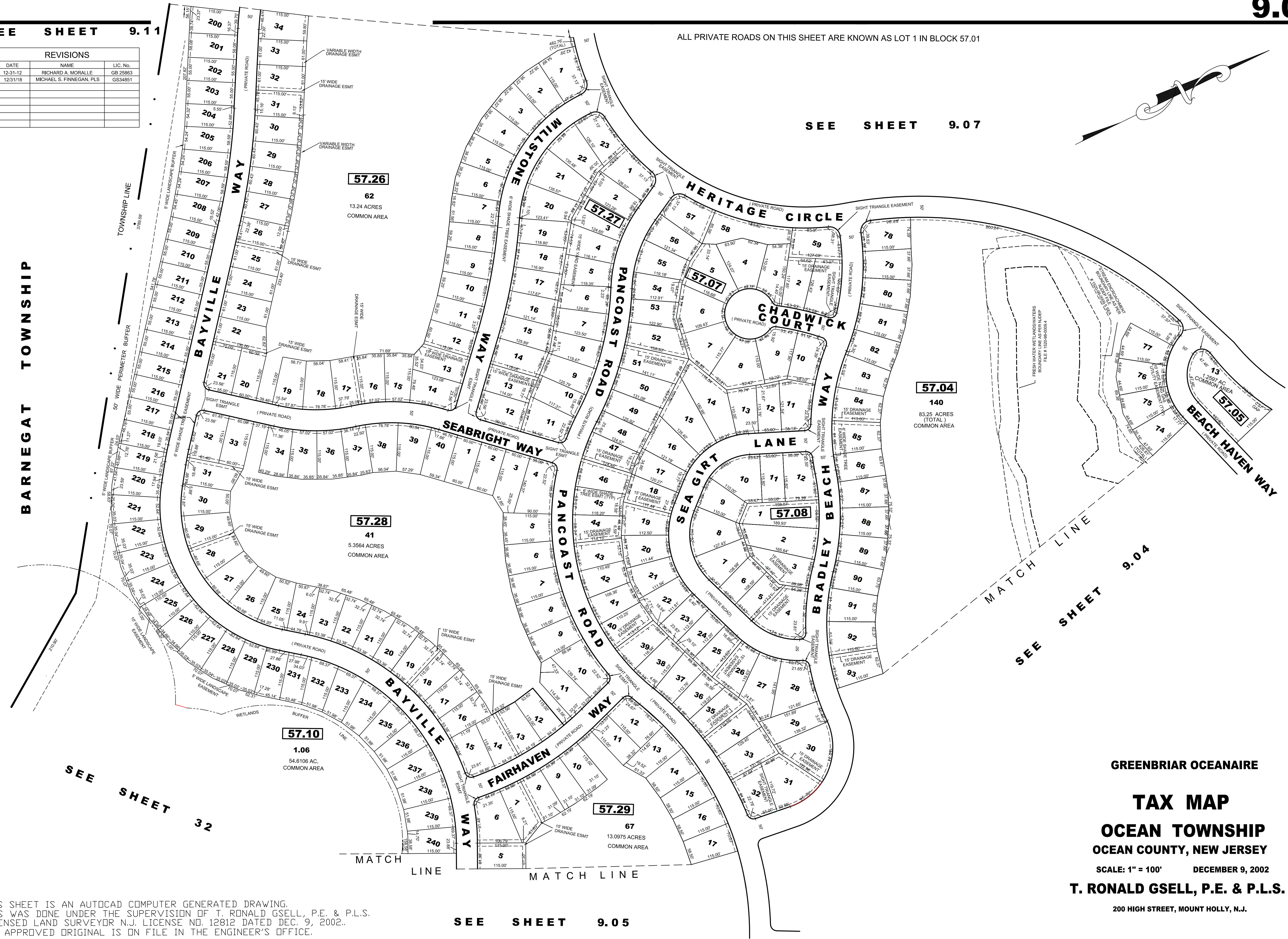
SEE SHEET 9.11

REVISIONS		
DATE	NAME	LIC. No.
12-31-12	RICHARD A. MORALLE	GB 25983
12/31/18	MICHAEL S. FINNEGAN, PLS	GS34851

ALL PRIVATE ROADS ON THIS SHEET ARE KNOWN AS LOT 1 IN BLOCK 57.01

SEE SHEET 9.07

BARNEGAT TOWNSHIP



SEE SHEET 32

SEE SHEET 9.04

MATCH LINE

SEE SHEET 9.05

GREENBRIAR OCEANAIRE

TAX MAP
OCEAN TOWNSHIP
OCEAN COUNTY, NEW JERSEY

SCALE: 1" = 100' DECEMBER 9, 2002

T. RONALD GSELL, P.E. & P.L.S.

200 HIGH STREET, MOUNT HOLLY, N.J.

THIS SHEET IS AN AUTOCAD COMPUTER GENERATED DRAWING.
 THIS WAS DONE UNDER THE SUPERVISION OF T. RONALD GSELL, P.E. & P.L.S.
 LICENSED LAND SURVEYOR N.J. LICENSE NO. 12812 DATED DEC. 9, 2002.
 THE APPROVED ORIGINAL IS ON FILE IN THE ENGINEER'S OFFICE.