

I HEREBY CERTIFY THAT THIS MAP HAS BEEN REVISED UNDER MY IMMEDIATE SUPERVISION, AND COMPLIES WITH THE LAWS OF THE STATE OF NEW JERSEY

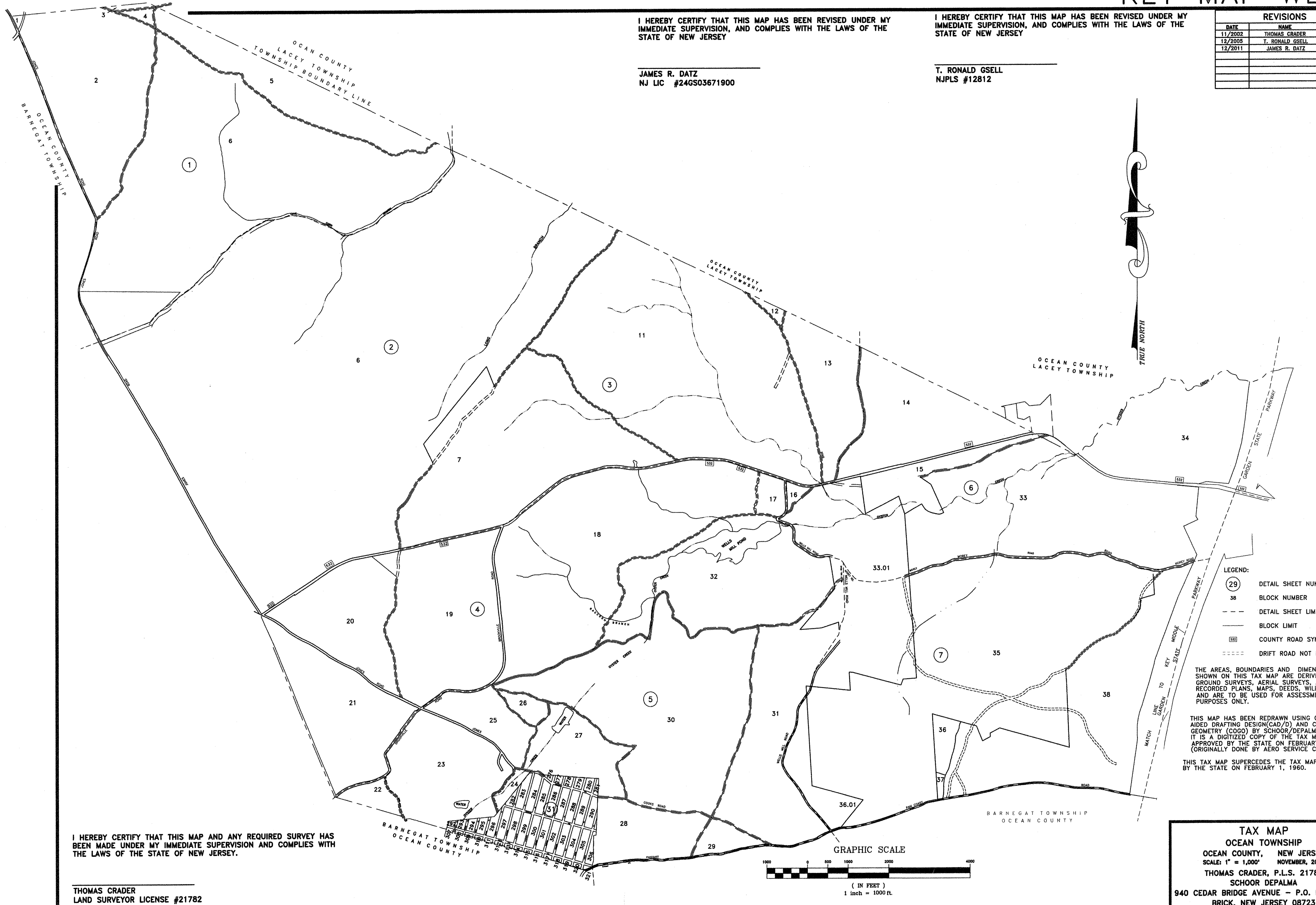
JAMES R. DATZ  
NJ LIC #24GS03671900

I HEREBY CERTIFY THAT THIS MAP HAS BEEN REVISED UNDER MY IMMEDIATE SUPERVISION, AND COMPLIES WITH THE LAWS OF THE STATE OF NEW JERSEY

T. RONALD GSELL  
NJPLS #12812

### REVISIONS

DATE	NAME	LIC. No.
11/2002	THOMAS CRADER	21782
12/2005	T. RONALD GSELL	12812
12/2011	JAMES R. DATZ	24GS03671900



- LEGEND:
- (29) DETAIL SHEET NUMBER
  - 38 BLOCK NUMBER
  - - - - - DETAIL SHEET LIMIT
  - — — — — BLOCK LIMIT
  - 532 COUNTY ROAD SYMBOL
  - ..... DRIFT ROAD NOT DEDICATED

THE AREAS, BOUNDARIES AND DIMENSIONS SHOWN ON THIS TAX MAP ARE DERIVED FROM GROUND SURVEYS, AERIAL SURVEYS, AND RECORDED PLANS, MAPS, DEEDS, WILLS, AND ARE TO BE USED FOR ASSESSMENT PURPOSES ONLY.

THIS MAP HAS BEEN REDRAWN USING COMPUTER/AIDED DRAFTING DESIGN(CAD/D) AND COORDINATE GEOMETRY (COGO) BY SCHOOR/DEPALMA. IT IS A DIGITIZED COPY OF THE TAX MAP APPROVED BY THE STATE ON FEBRUARY 1, 1960. (ORIGINALLY DONE BY AERO SERVICE CORP.)

THIS TAX MAP SUPERCEDES THE TAX MAP APPROVED BY THE STATE ON FEBRUARY 1, 1960.

I HEREBY CERTIFY THAT THIS MAP AND ANY REQUIRED SURVEY HAS BEEN MADE UNDER MY IMMEDIATE SUPERVISION AND COMPLIES WITH THE LAWS OF THE STATE OF NEW JERSEY.

THOMAS CRADER  
LAND SURVEYOR LICENSE #21782

**TAX MAP**  
OCEAN TOWNSHIP  
OCEAN COUNTY, NEW JERSEY  
SCALE: 1" = 1,000'  
NOVEMBER, 2002  
THOMAS CRADER, P.L.S. 21782  
SCHOOR DEPALMA  
940 CEDAR BRIDGE AVENUE - P.O. BOX 1429  
BRICK, NEW JERSEY 08723